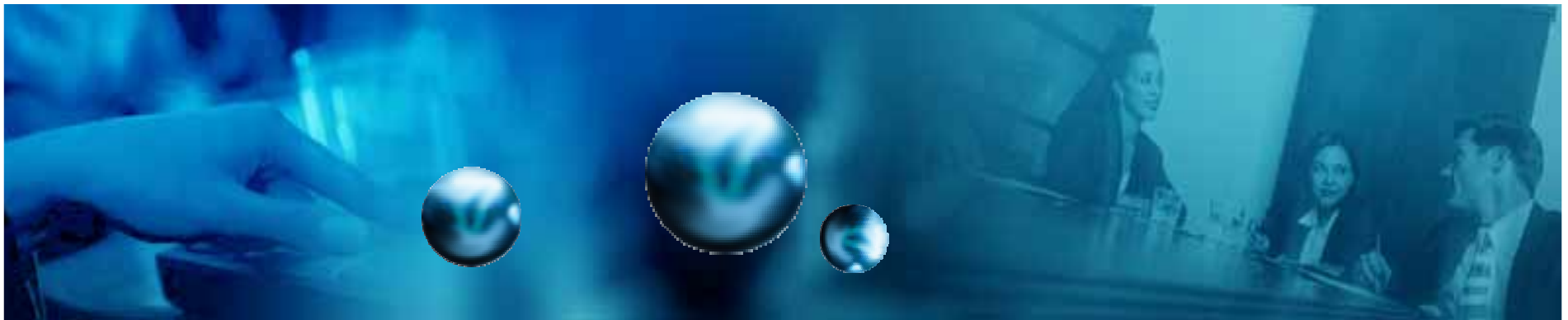


Diyn Optoelectronics Co.,Ltd



Company Profile



Contents

Milestones

Factory

Products

Customers



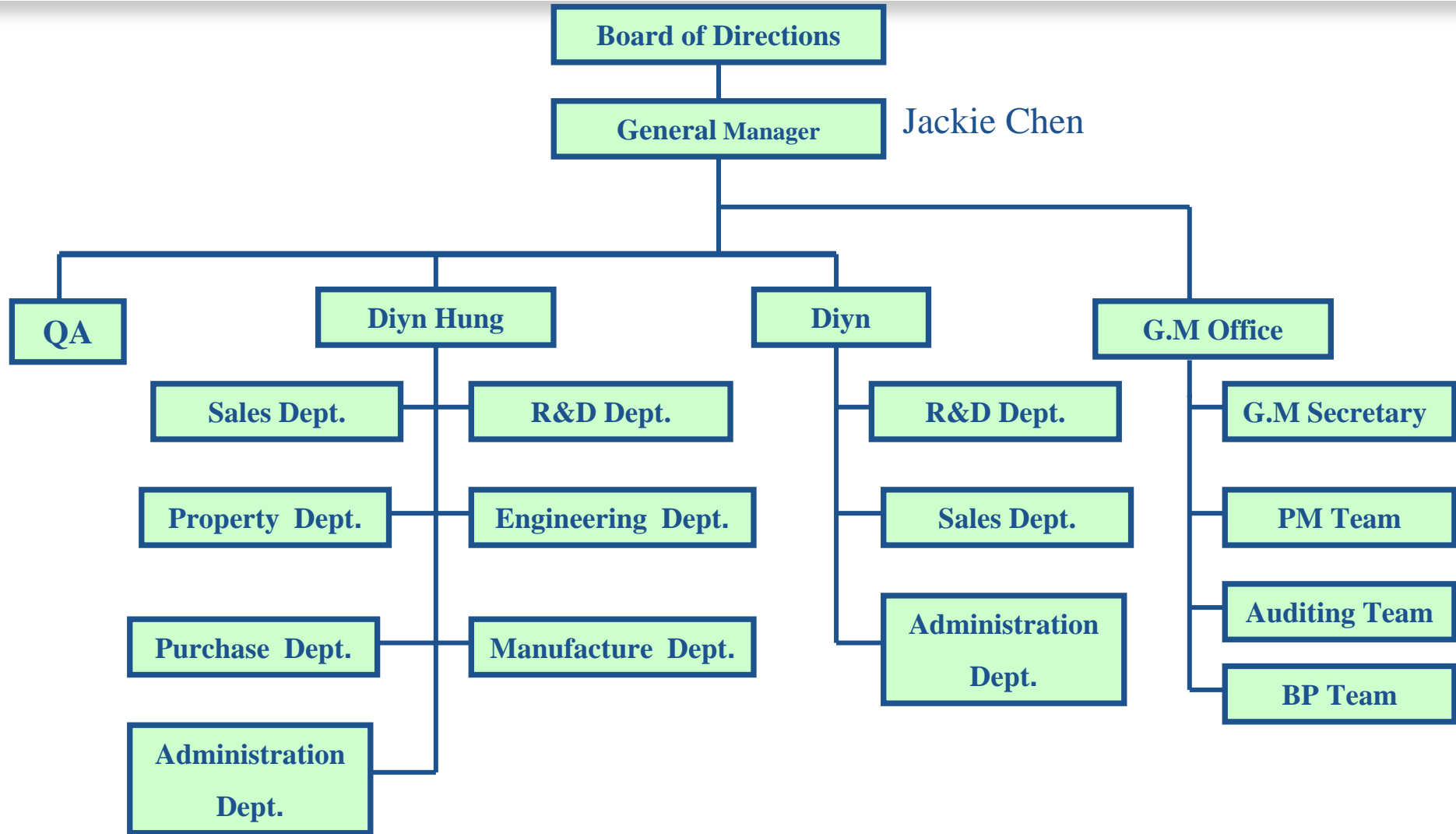
Milestones

- **2005 Established “DIYN HUNG” Kunshan 2nd Factory.**
- **2003 Increased Investment with Capital US:6,300,000**
- **2001 Obtained ISO-9002 certificate from “UKAS Quality Management”**
- **2000 Increased Investment with Capital US:2,200,000**
- **2000 Shifted “DIYN HUNG” from Dongguan to Kunshan**
- **1995 Established “DIYN HUNG” Dongguan Factory in China**
- **1992 Established “DIYN” Taiwan Co.,Ltd. with Capital US:160,000**





Organization Chart





Factory

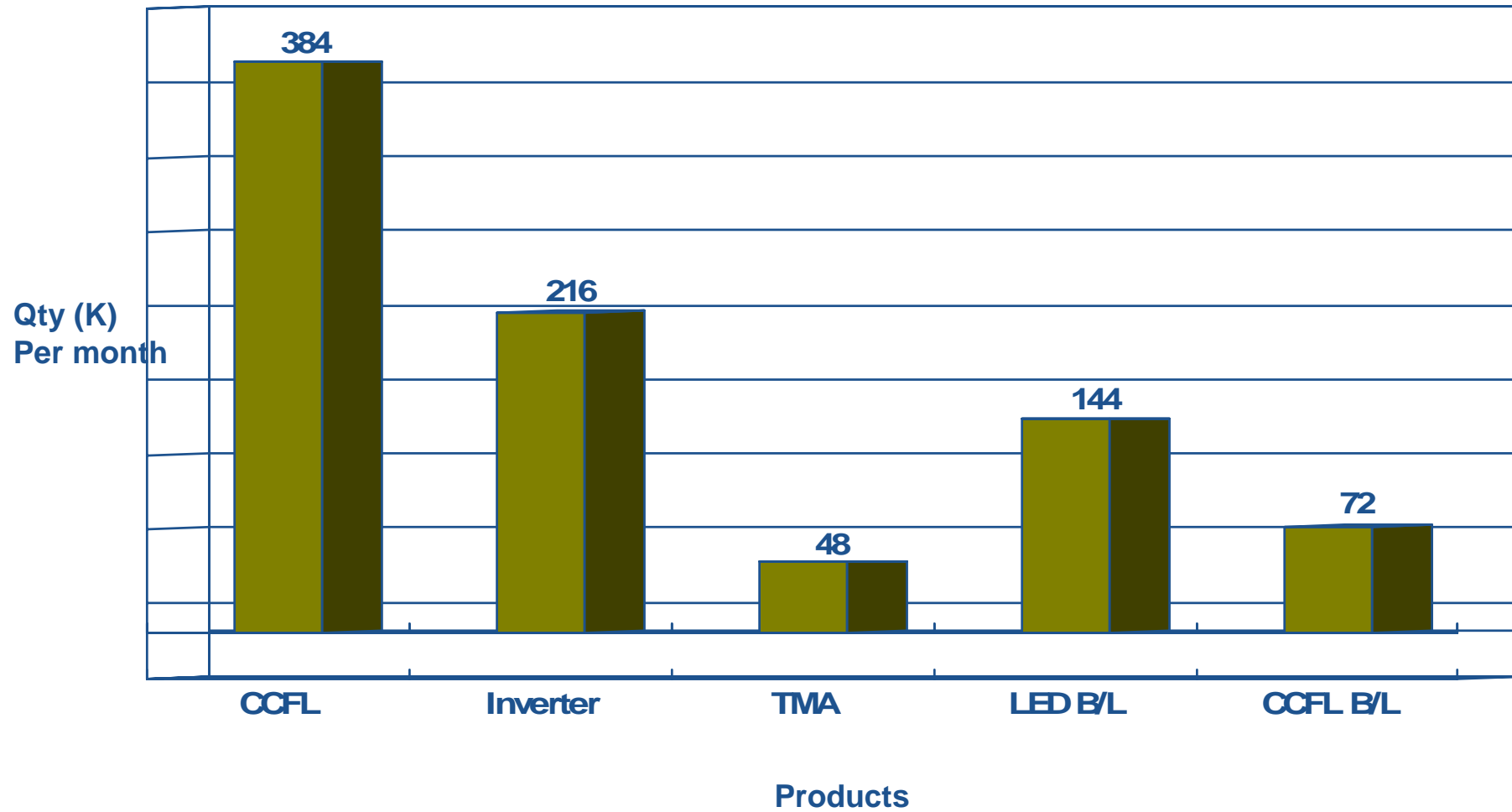
- **Kunshan 2nd Factory:**
- **Location: Kunshan Zhangpu**
- **Landscape: 21,000 m²**
- **Building: 11,000m² (initial stage)**
- **Production-Lines:**
 - Backlight Unit Assembly (Conveyor Belt)— 12 Lines**
 - C.C.F. Lamp Assembly—3 Lines**
 - Inverter Assembly— 2 Lines**
 - Ink Printing (for light-guide)— 3 Lines**
 - Injection Machine: >100 (T)— 10 sets**
- **Employees: 500 People**



KUNSHAN DIYN HUNG OPTOELECTRONICS CO., LTD



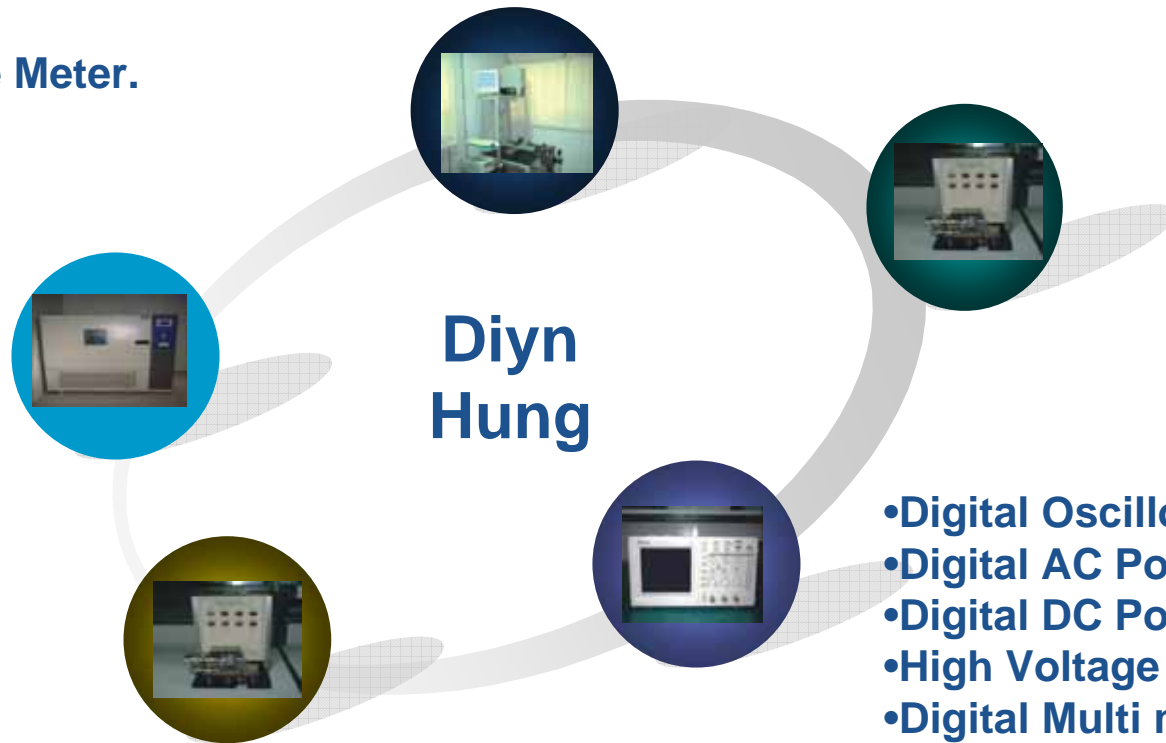
Capacity: Per line/ per month





Facilities

- Point-Line-Surface Optical Analyzer.
- BM-7 Brightness chromatics Analyzer.
- BM-9 Brightness chromatics Analyzer.
- L.u.x. Analyzer.
- Chamber.
- IR Temperature Meter.
- Hi-Pot Tester.
- ATE.



- Digital Oscilloscope.
- Digital AC Power Supply.
- Digital DC Power Supply.
- High Voltage Current Meter.
- Digital Multi meter.
- Power Analyzer.
- projective Microscope.



Major Products

Product Line

CCFL
Backlight

LED
Backlight

Inverter
&
CCFL

TMA





Cold Cathode Fluorescent Lamps

CCFL
Backlight



7.0" : 4500cd/m²

"L" shape C.C.F.L
Light guide: 3mm
BEF: 1 piece

8.4" : 4300cd/m²

"L" shape C.C.F.L
Light guide: 3mm
BEF: 1 piece



5.5" : 1100cd/m²

Straight shape C.C.F.L
Light guide: 2mm

7.5" : 2500cd/m²

Straight shape C.C.F.L
Light guide: 3mm
BEF: 2 pieces

15" : 1900cd/m²

Straight shape C.C.F.L
(12Lamps)
BEF: 2 Pieces



Light-emitting diode



2.5"- 4LEDS:2200cd /m²

1.8"- 3LEDS:3300cd /m²

6.5"- 10LEDS:1200cd /m²



1.4"- 1LED:1500cd /m²



1.5"- 1LEDS:1800cd /m²



2"- 4LEDS:1800cd /m²



Transparent Media Adapter

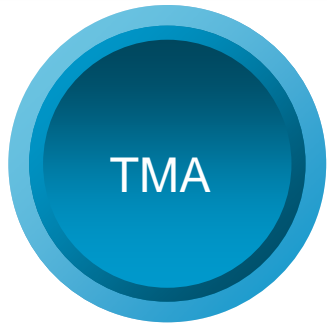
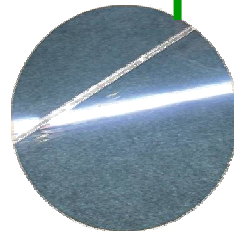


Diagram of products



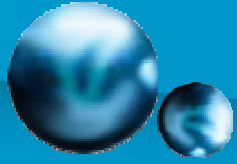
TMA



CCFL



Inverter

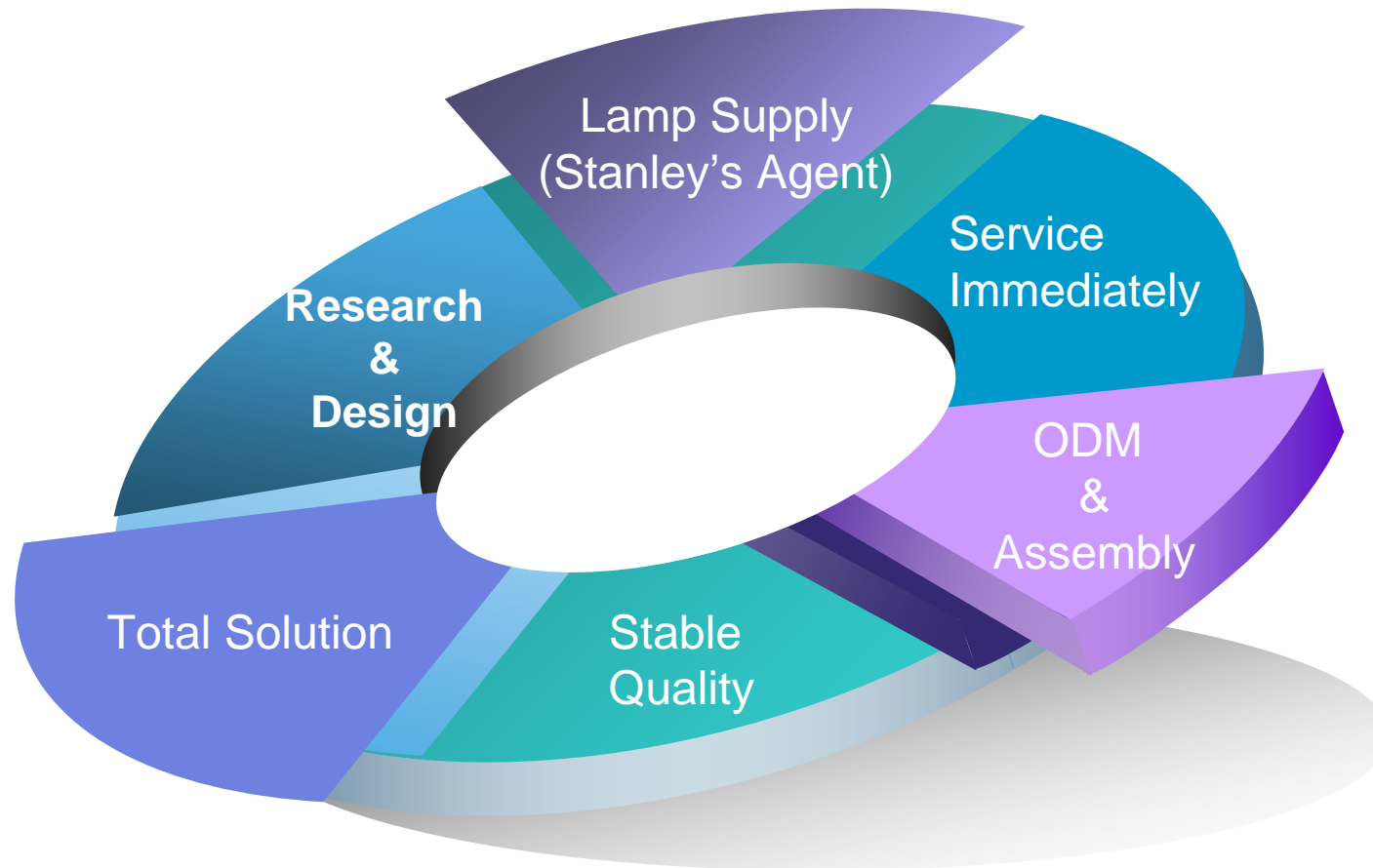


Customers



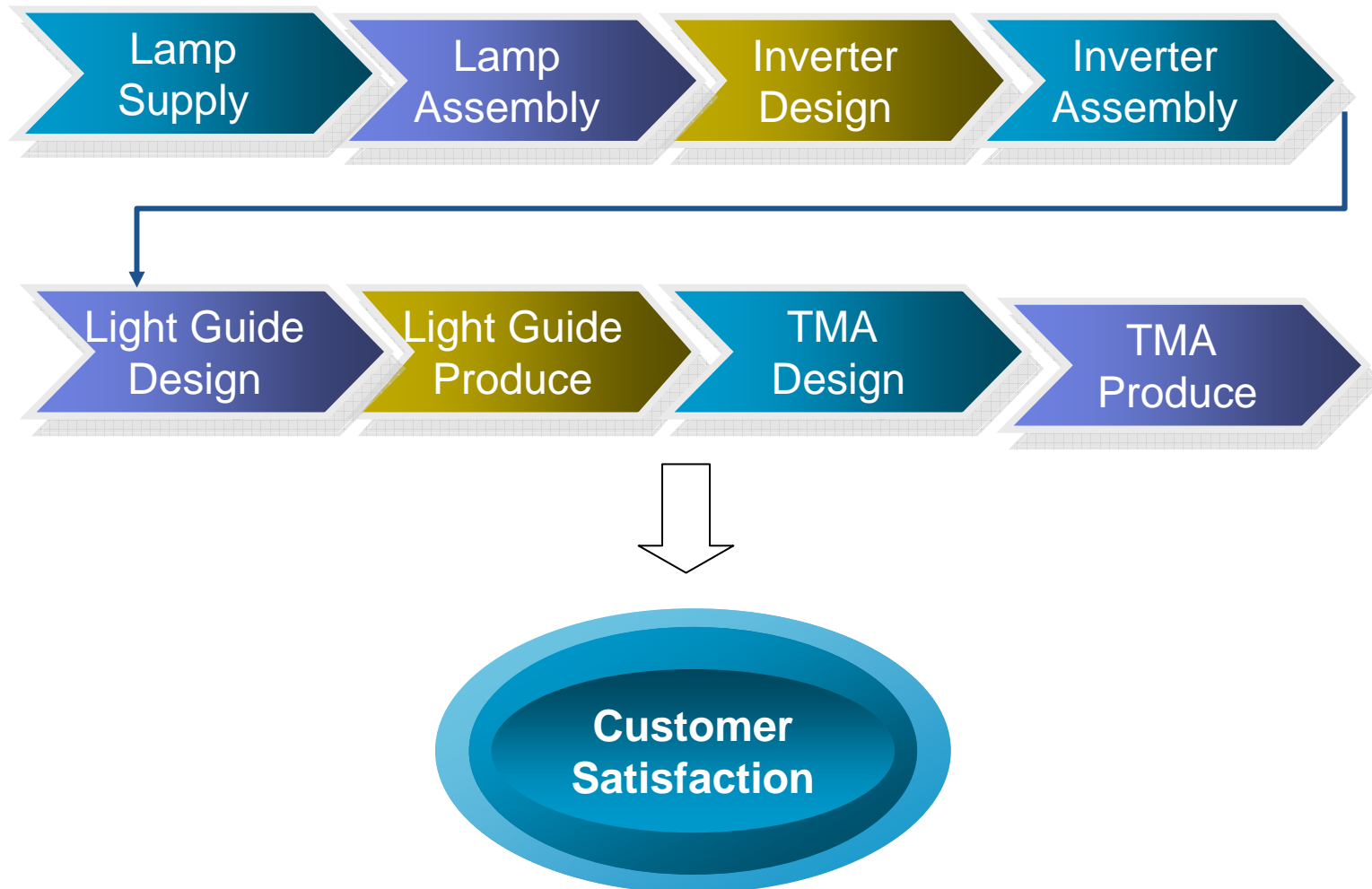


Advantage





Total Solution





THANK YOU